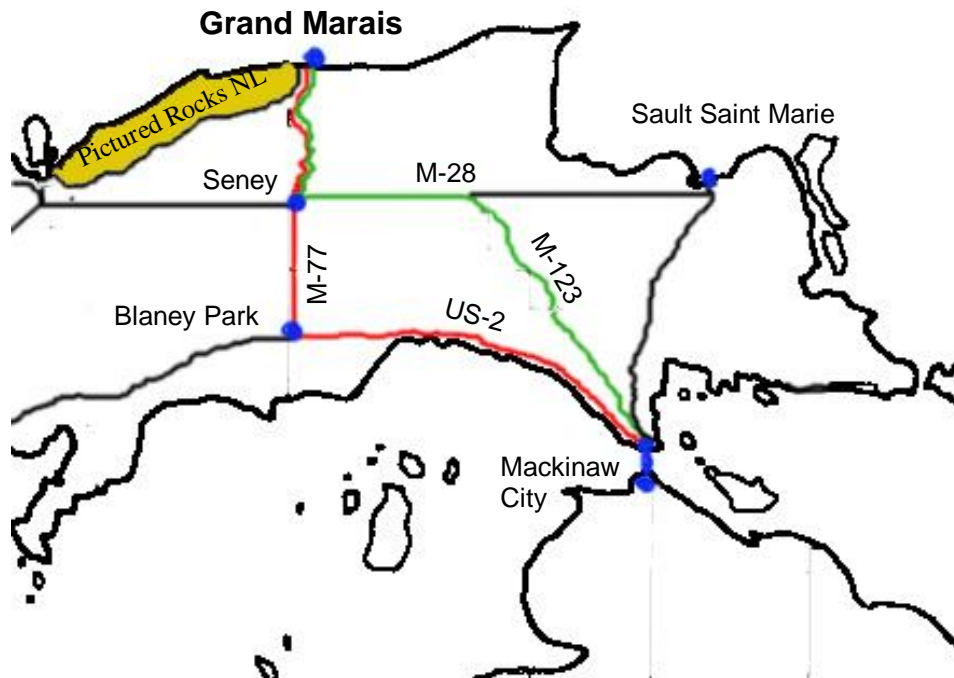


## Getting to Grand Marais:

We are located two hours from the Mackinac Bridge.  
From the Bridge, you can:

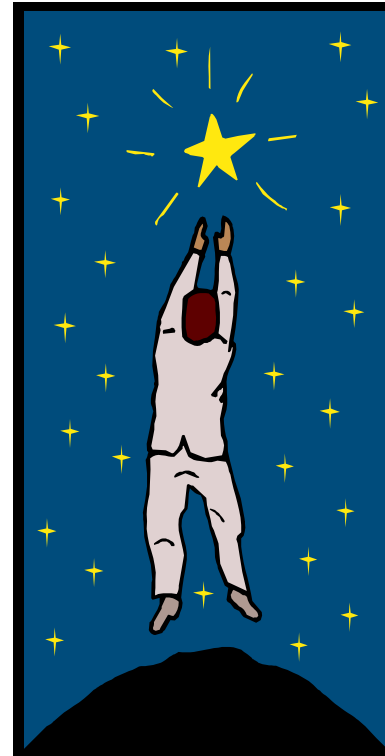
- take US-2 (the scenic lakeshore route) west to M-77 and turn north at Blaney Park, or
- Follow I-75 north 7 miles; take M-123 northwest to M-28; turn west on M-28 to Seney, then turn north on M-77 to Grand Marais. (the scenic woods and wetlands route)



# Grand Marais, Michigan

*Eastern Gateway to  
Pictured Rocks National Lakeshore*

miles and miles of dark skies



**A Slice  
of  
Heaven  
for  
Skywatchers!**

\*\*\*\*\*  
★ **Premium Skywatching in Grand Marais** ★  
★

★ Welcome to Grand Marais, our small village on the shore of  
★ Lake Superior. To the west is Pictured Rocks National Lake-  
★ shore; to the east is Lake Superior State Forest; to the south  
★ is forest and marshland. We're surrounded by miles and  
★ miles of **dark skies**. We have plenty of great skywatching  
★ spots nearby, including:

★ **Burt Township Airport:** only four miles from town, this  
★ grass airport is unlit. In the evening, it offers a **vast field**  
★ **and a dark sky** arching overhead, perfect for setting up your  
★ telescope.

★ **Pictured Rocks National Lakeshore:** Within the park  
★ are many open shoreline and inland lake spots. We suggest  
★ starting at the Sable Lake overlook, only five minutes from  
★ town, for **views to the south**, and Twelvemile Beach for  
★ **views over the big lake**.

★ **Lake Superior State Forest:** Fifteen minutes east of  
★ town is Perry's Landing, a **wide, open beach** with parking  
★ next to a beautiful primitive campground. The steps down to  
★ the beach make it easy to transport your equipment.

★ **Kingston Plains:** More adventurous skywatchers might  
★ want to take a 30-minute ride out to this large plain south-  
★ west of town in the Pictured Rocks Buffer Zone. Huge  
★ stumps are all that's left of the white pine forest that once  
★ covered this area. The area has remained **open, with scat-**  
★ **tered trees**. Pick your spot and settle in for an evening of  
★ stargazing!

★ **Accommodations**

- Woodland Park Campground
- Four motels
- Several resorts
- Cabin and house rentals

★ **Restaurants**

- West Bay Diner and Deli
- Dunes Saloon and Microbrewery
- North Shore Lodge Restaurant
- Sportsmans Restaurant

★ **Local Sites of Interest**

- Au Sable Lighthouse
- Donahey Woods
- Gitche Gumee Agate and History Museum
- Historical Walking Tour
- Lightkeeper's House Museum
- Old Post Office Museum
- Pickle Barrel House Museum
- Pictured Rocks National Lakeshore
- Seney National Wildlife Refuge

★ **Shopping**

- Complete grocery and hardware needs
- Gas
- Bank/ATM
- Fishing and hunting supplies
- Gifts and crafts

★ Visit us on the Internet for more information:  
★ **[www.grandmaraismichigan.com](http://www.grandmaraismichigan.com)** ★